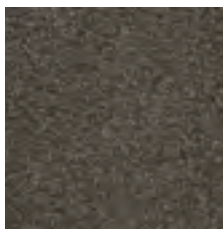




Technical details

Structure :	1/10 cut pile	Number of tufts:	221.200 / m ²
Colours:	10	Back:	Actionbac
Pile materials:	100% polyamide, SDN	Fire behaviour:	Cfl-s1
Pile weight:	1790 gr/m ²	Usage class:	23 / 32
Total weight:	2510 gr/m ²	Width:	400 cm
Pile height:	9.5 mm	Extra:	Maintenance friendly Bleach proof UV-resistant
Total height:	11.5 mm		

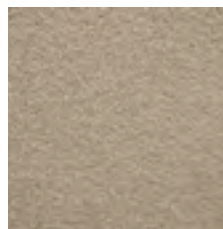
Available colours



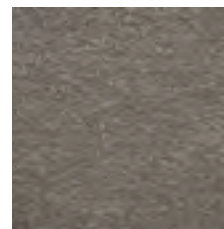
75



78



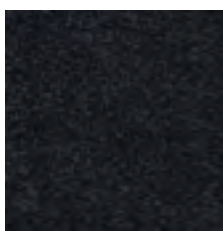
172



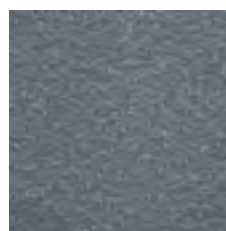
173



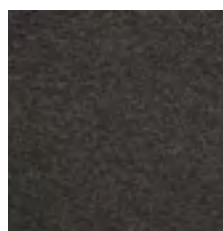
174



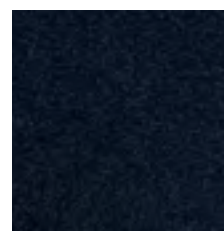
177



275



277



285



292