



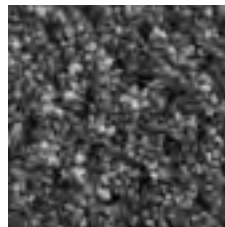
Technical details

| | | | |
|-----------------|------------------------|------------------|--|
| Structure : | 1/10 cut pile | Number of tufts: | 187.000 / m ² |
| Colours: | 7 | Back: | Actionbac |
| Pile materials: | 100% polyamide, SDX | Fire behaviour: | Cfl-s1 |
| Pile weight: | 1200 gr/m ² | Usage class: | 23 / 33 |
| Total weight: | 2450 gr/m ² | Width: | 400 cm |
| Pile height: | 7.0 mm | Extra: | Maintenance friendly Bleach proof UV-resistant |
| Total height: | 9.0 mm | | |

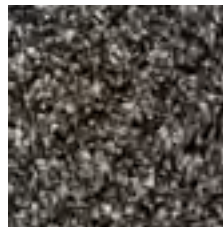
Available colours



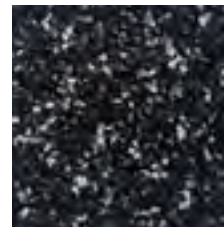
735



740



760



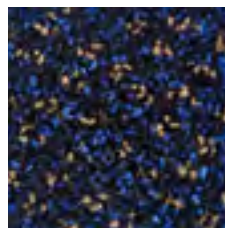
785



880



950



965