



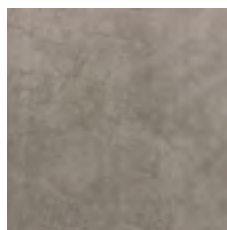
Technical details

Structure:	1/10 cut pile	Number of tufts:	157.480 / m ²
Colours:	5	Back:	Actionbac
Pile materials:	100% polyamide, SDX	Fire behaviour:	Cfl-s1
Pile weight:	1200 gr/m ²	Usage class:	33
Total weight:	2680 gr/m ²	Width:	400 cm
Pile height:	7 mm	Extra:	Maintenance friendly Bleach proof UV-resistant
Total height:	9.5 mm		

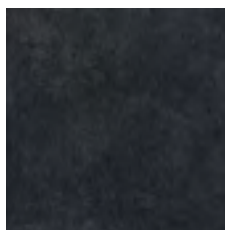
Available colours



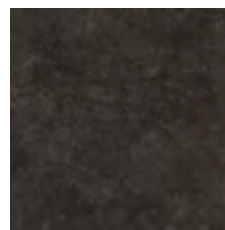
190



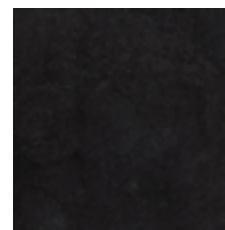
220



750



760



790