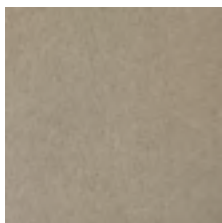




Technical details

Structure:	1/10 cut pile	Number of tufts:	187.000 / m ²
Colours:	17	Back:	Actionbac
Pile materials:	100% polyamide, SDX	Fire behaviour:	Cfl-s1
Pile weight:	1200 gr/m ²	Usage class:	23 / 32
Total weight:	2450 gr/m ²	Width:	400 cm
Pile height:	7.0 mm	Extra:	Maintenance friendly Bleach proof UV-resistant
Total height:	9.0 mm		

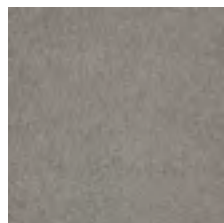
Available colours



100



190



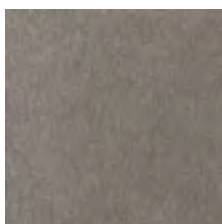
200



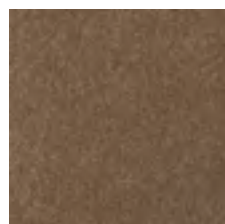
220



230



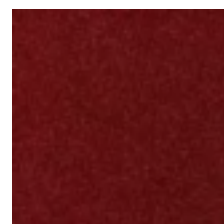
240



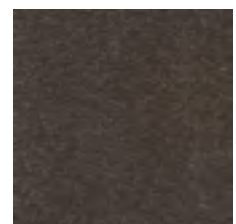
280



365



640



730

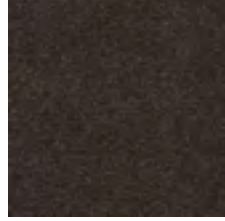
Gemini



735



750



760



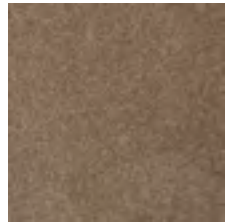
765



770



790



830