

# Hamilton



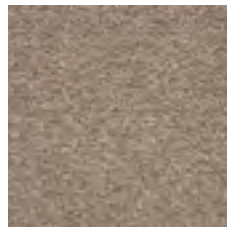
## Technical details

Structure :	1/10 cut pile	Number of tufts:	185.300 / m <sup>2</sup>
Colours:	16	Back:	Actionbac
FPile materials:	100% polyamide, SDX	Fire behaviour:	Bfl-s1
Pile weight:	1600 gr/m <sup>2</sup>	Usage class:	23 / 32
Total weight:	2730 gr/m <sup>2</sup>	Width:	400 cm
Pile height:	10.0 mm	Extra:	Maintenance friendly Bleach proof UV-resistant
Total height:	12.4 mm		

## Available colours



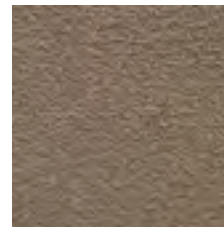
**200**



**220**



**240**



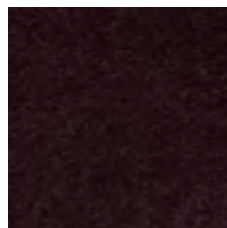
**290**



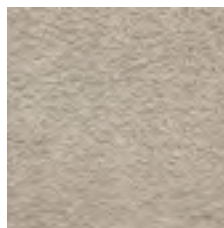
**320**



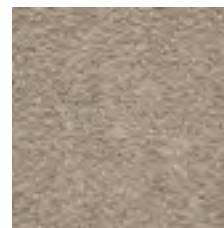
**620**



**640**



**700**



**710**

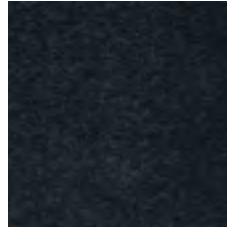


**730**

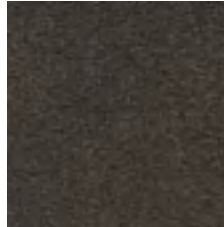
# Hamilton



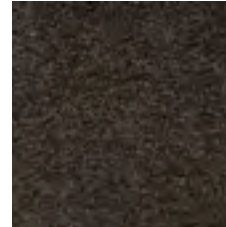
735



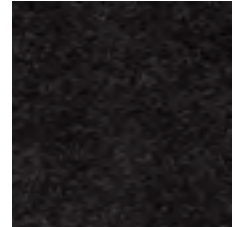
750



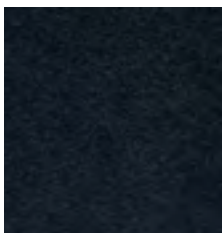
760



785



790



920