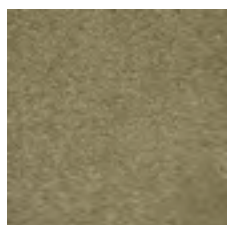
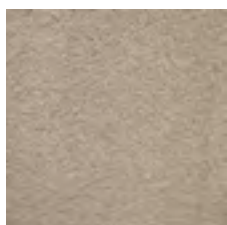
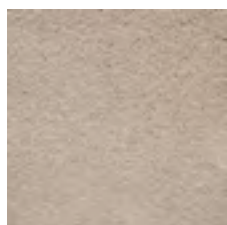
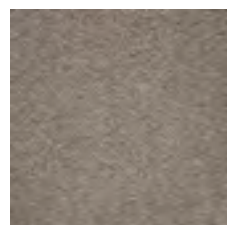
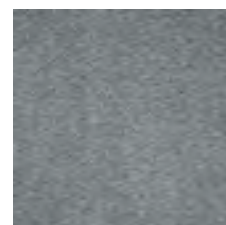
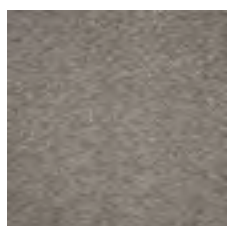
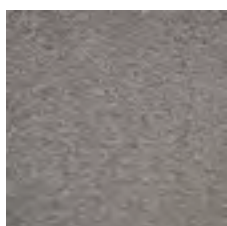
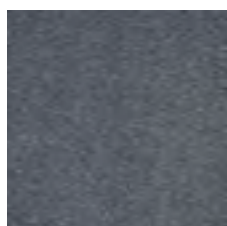
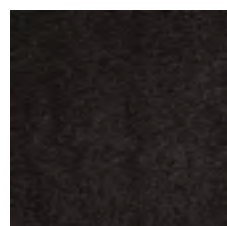
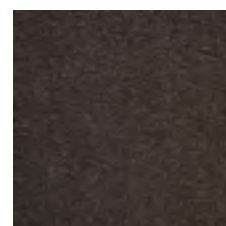




Technische eigenschappen

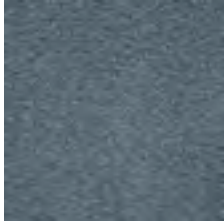
Constructie:	1/10 gesneden pool	Aantal noppen:	189.120 / m ²
Kleuren:	17	Draagdoek:	Woven pp
Poolmateriaal:	Strong Synthetisch Soft ConXyarn	Brandtest:	Dfl-s1
Poolgewicht:	1350 gr/m ²	Warmteweerstand:	0.14 m ² K/W
Totaalgewicht:	2160 gr/m ²	Gebruiksklasse:	33
Poolhoogte:	8,5 mm	Breedte:	400 cm
Totaalhoogte:	10,5 mm	GUT/Prodis	93CF523C

Verkrijgbare kleuren

**40****69****70****72****74****75****76****77****78****79**



Velar



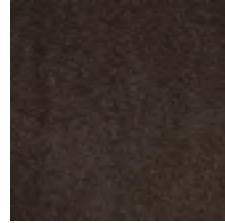
81



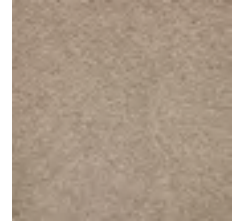
90



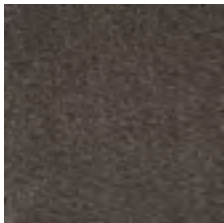
93



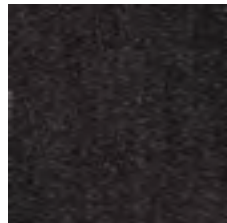
95



171



176



277