

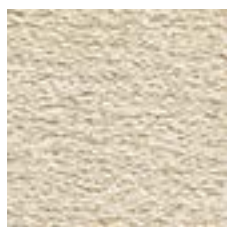
Rosebank



Technical details

Structure:	1/10 cut pile	Number of tufts:	197.500 / m ²
Dyeing method:	Piece dyed	Back:	Woven PP
Pile materials:	100% PA66	Fire behaviour:	Bfl-S1
Pile weight:	3300 gr/m	Usage class:	23 / 32
Total weight:	4000 gr/m	Width:	400 cm
Pile height:	12 mm	Impact noise rating	27 dB
Total height:	14 mm	Colours:	13

Available colours



105



108



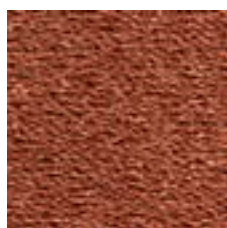
115



119



122



219



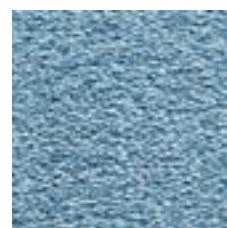
301



320



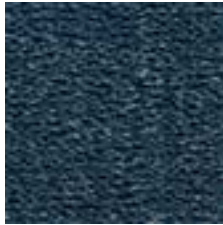
322



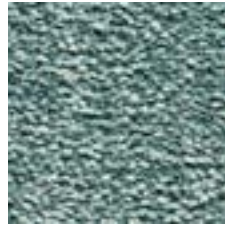
412



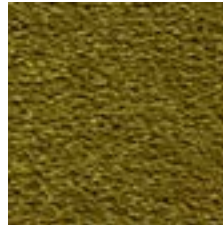
Rosebank



420



424



525

